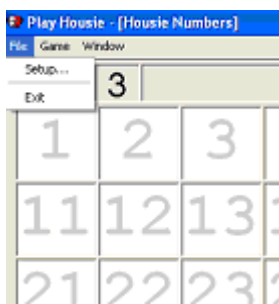


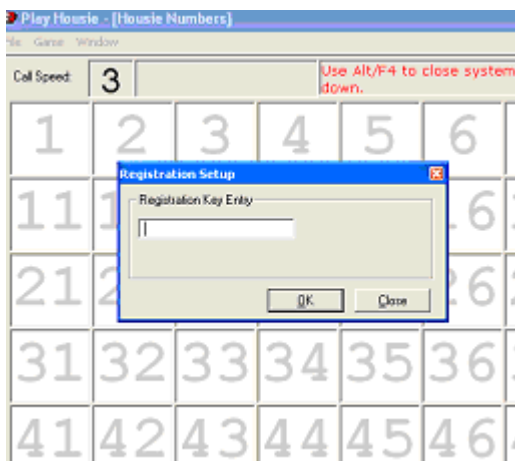
PlayHousie - Instructions

When you first download **PlayHousie** you are able to play one session of Housie before a message will appear asking you to enter a registration key. You will not be able to operate **PlayHousie** until this registration key has been entered correctly.

PlayHousie is Registered to run on the PC that it was installed on only. If you require to install on another PC then a new key will need to be obtained by making a request detailing your original purchase to sales@global-housie.com.



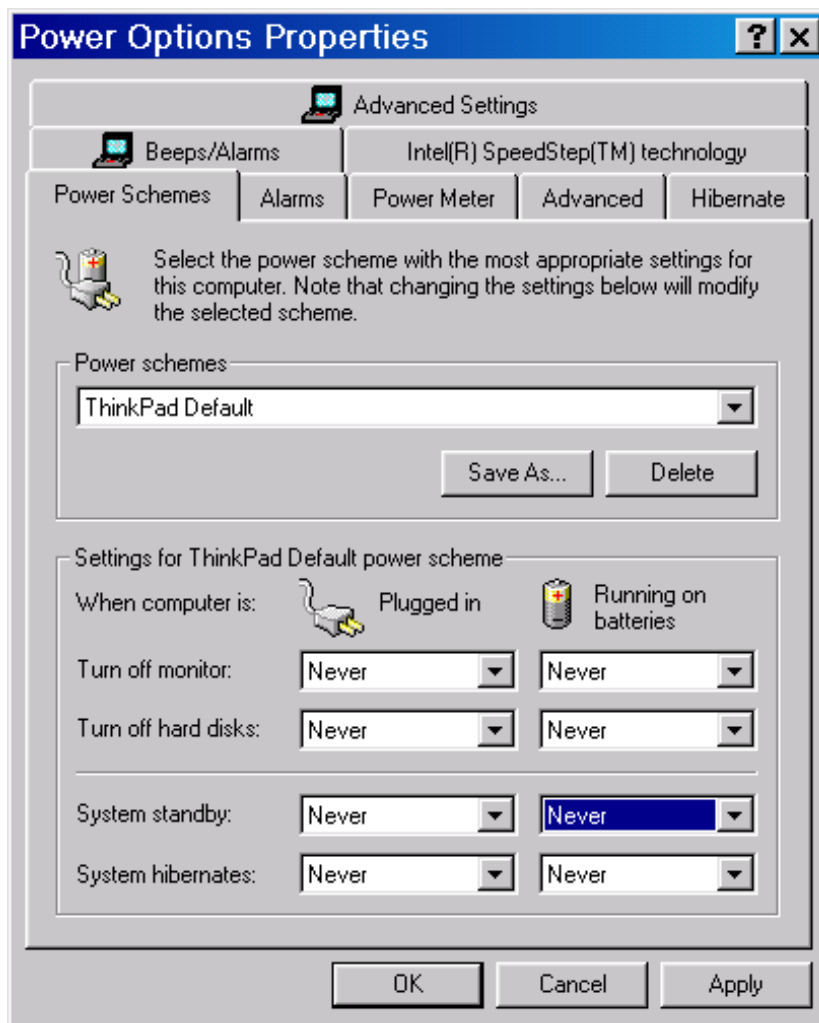
You can select **File / Setup** on the initial screen



You can then simply key or copy and paste the key supplied into the **Registration Key Entry** and enter **OK**

One time verification prior to running *PlayHousie*

- Check the settings of the "Power Options" on your PC.
Start/Settings/Control Panel/Power Options
- Make sure that the following options are set to "Never"
 - "Turn off monitor"
 - "Turn off hard disks"
 - "System standby"
 - "System hibernates"



You do not want the screen saver appearing in the middle of your game.

**** Housie Commands ****

1-5 Call Speed

S Select Cards in play

Space Pause Calling

Q Reset Game

L Start Game for a Line

H Start Game for a Full House

C Continue game – following pause or for a full house following a Line

T Toggle Housie Slang off/on

B Toggle Big Number display

I Display Frequencies that each number has been called

U Hide Frequencies

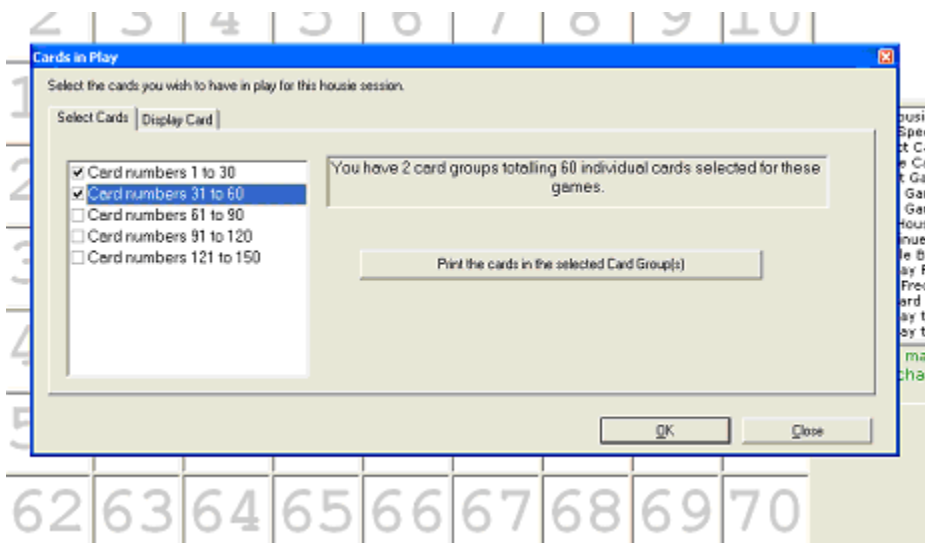
**** Card Verify Commands ****

N Display the next card

P Display the previous card

You will need to select the cards in play for this session of **PlayHousie** by keying

S . this will present you with the following screen.



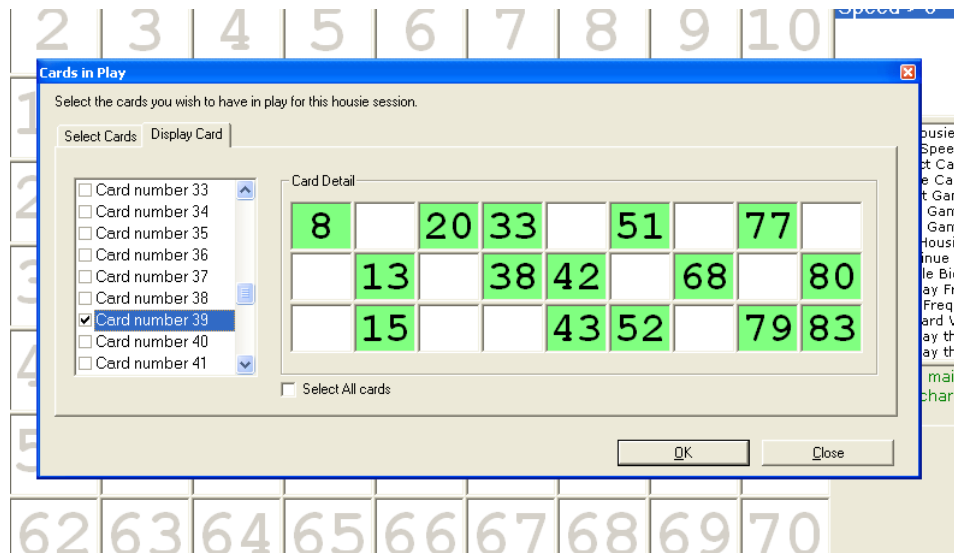
In the example above we have selected

Card numbers 1 to 30

Card Number 31 to 60

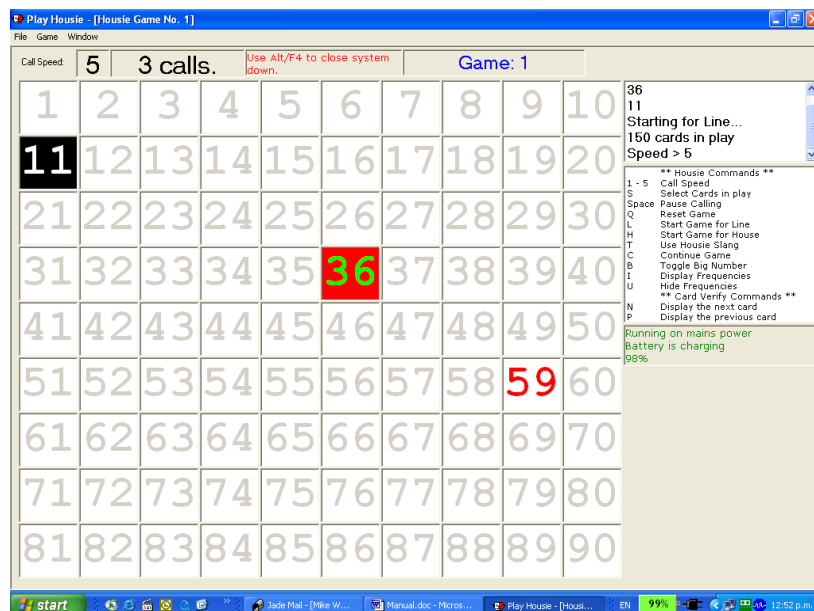
If you wanted to play all 60 cards simply enter **OK**

If you want to select certain cards from within this range enter **Display Card** you will then be presented with the following screen.



You would then **uncheck** the **Select All cards** box
 Then proceed to select by **checking** all the individual cards that you wish to play. Each of these cards selected are shown in **Green**
 When all cards have been selected you enter **OK** this will tell you how many cards you have in play for this session.

Note: Only the cards you have selected will be in play. **PlayHousie** remembers the cards in play and their numbers, it will automatically stop when either the **Line** is completed or the **Full House** is completed depending on the **Housie Command** that you have entered.



For the above game you will note that we are playing for a **Line**, **150** cards are in play, and the **Call Speed** is **5**.

The first number called was **11** the second number that has been called completely was **36**
 The number that is in the process of being called is **59**.

The game continues until **PlayHousie** detects that a **Line** has been completed. The winning card Number **2** is displayed and the numbers in **Green** are called back together with the Card Number and the Number of calls that have been made. You will note that the last number called on the card is **2**



We then enter **C** to continue for the Full House.

Calling of numbers continue until **PlayHousie** detects that a **Full House** has been completed.

The winning card Number **45** is displayed and the numbers in **Green** are called back together with the Card Number and the Number of calls that have been made. You will note that the last number called on the card is **1**

The operator simply keys **L** for a Line or **H** for a House to commence the next game

